

[Home](#)

UNEASYsilence

An Experiment23 Project

Background

Created in early 2004, UNEASYsilence aims to deliver coverage of offbeat & generally geeky news. Feel free to [subscribe via RSS](#), receive our daily digest [via email](#), or join the [conversation](#).

Contact

News tips? Feel free to get in touch via [email](#) or by phone 888.9.UNEASY or (888.986.3279).

Featured



Powered by



Observing the unobserved

Explore

- [Home](#) - Freshest updates
- [Archived](#) - Explore archived content

- [Categories](#) - Browse by category

Subscribe

- [Content](#) - Content summary via RSS
- [Comments](#) - View the comments Beat
- [Digest](#) - Daily digest via email

[Comment](#) or [Ping](#)

Jan 30, 2007

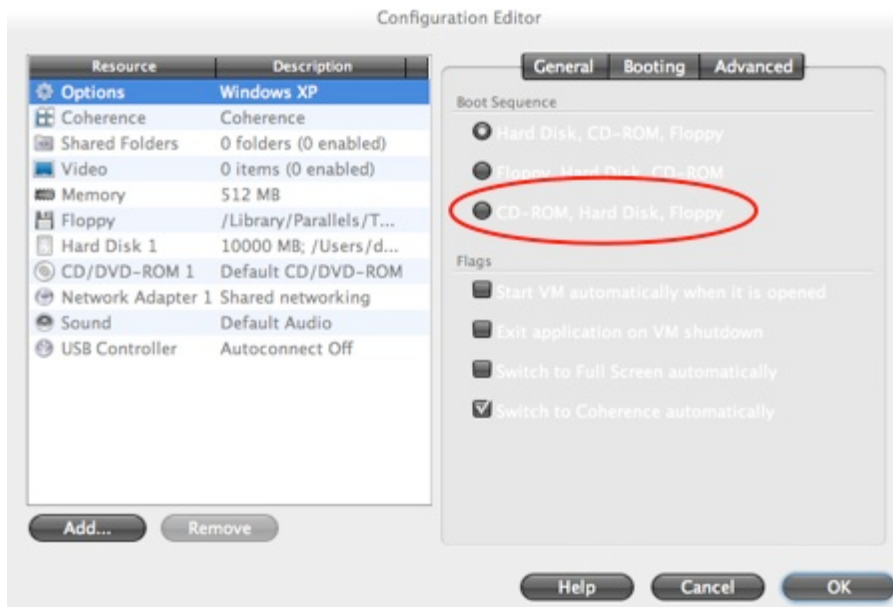
[How to Resize Your Parallels Drive, and Get Windows to Recognize It](#)

Posted in [Tech](#), [Scoop](#), [Apple](#), [Geeky](#) by Dan at 11:02 am | [Share This](#)



Sure Parallels includes a handy dandy hard little program called “Parallels Image Tool” that lets you dynamically resize your virtual hard disks image. But, thats all the tool does - resizing hard disk images. For Windows to understand that it got a much needed boost (without deleting all your data), you’ll need to pull out some fancy tricks. The procedure isn’t hard is you follow the instructions carefully.

- Assuming you already resized your hard disk image via the Parallels Image Tool you [download GParted](#) ([review](#)) from SourceForge.
- Once that ISO is downloaded, Open Parallels.
- Go to the **Edit** menu and select **Virtual Machine...**
- In the new *Configuration Editor* window, in **Boot Sequence** select **CD-ROM, Hard Disk, Floppy**



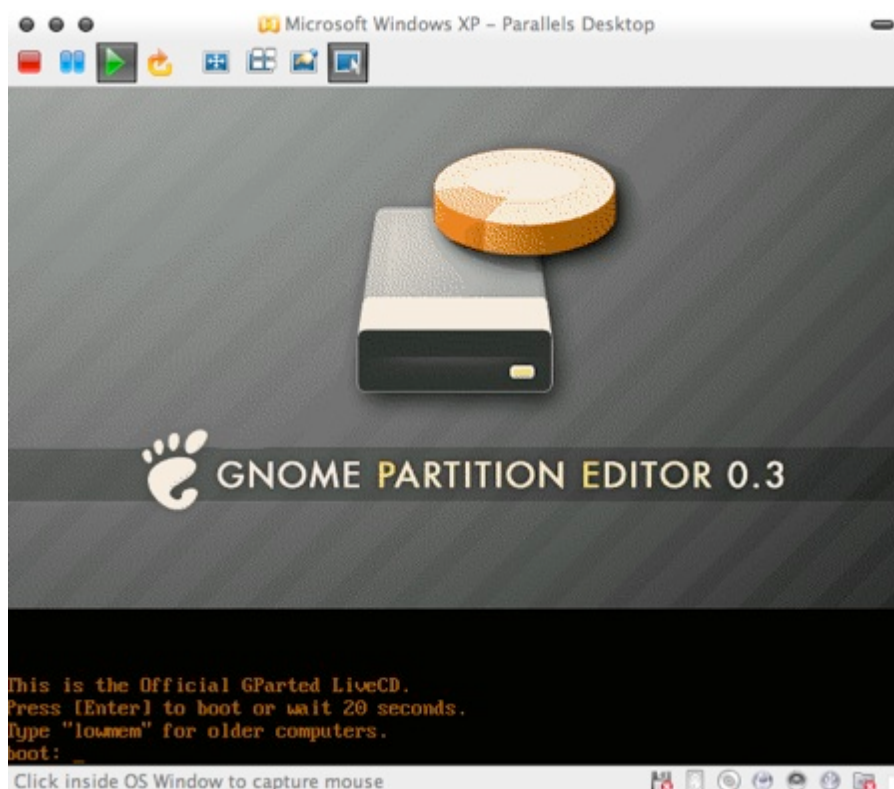
- Then select the **CD/DVD-ROM** option
- Under the *Emulation* subdivision select **Use ISO image file**



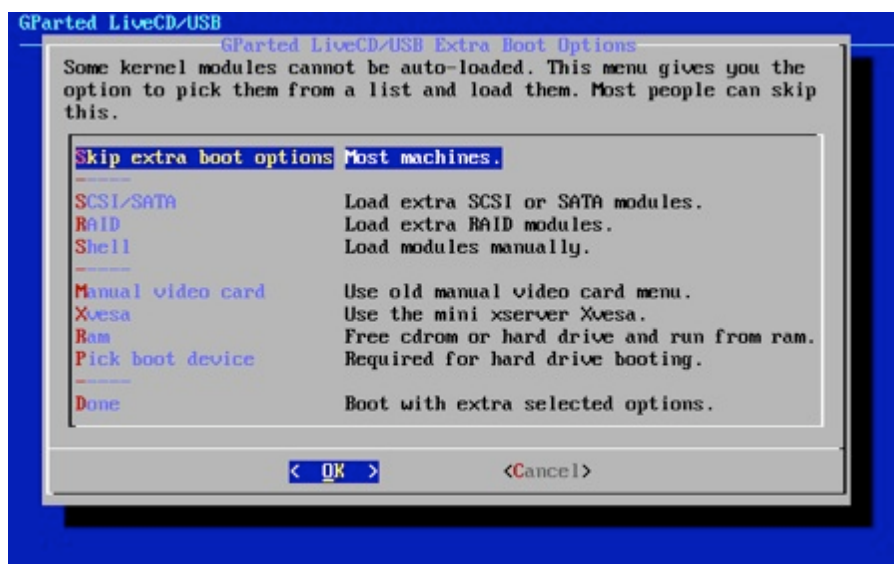
- Then select the ... next to when it says **Image File**
- Navigate to the *gparted-livecd-0.3.3-0.iso* file (Most likely saved on your desktop) and hit open
- Then press **OK** in the *Configuration Editor* window
- Start your Windows Virtual Machine



- You will know you did everything correctly so far when you see the following screen, at the prompt hit **RETURN**



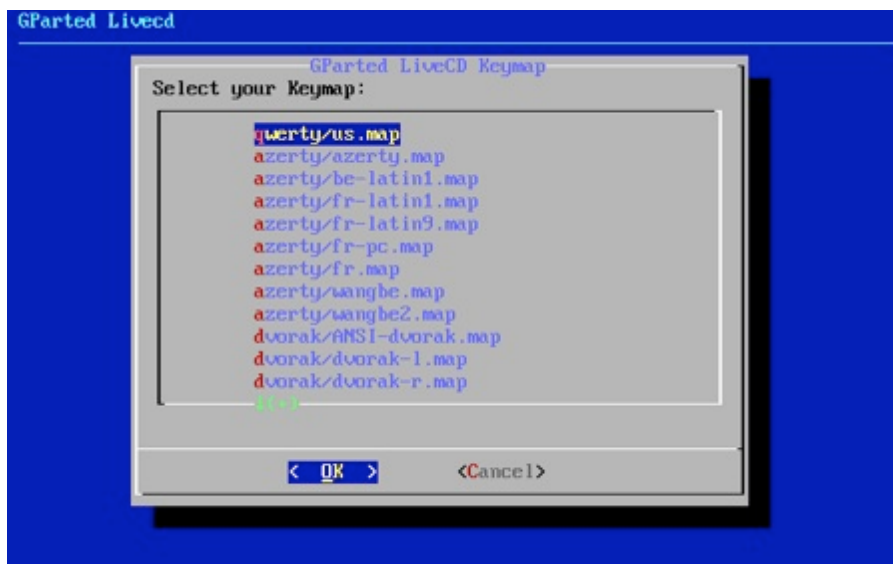
- Don't be scared of all the gibberish that scroll by fast on the screen, it is Linux (which powers GParted) doing its thing
- When prompted at the *GParted LiveCD/USB Extra Boot Options* window, press **return** on the *Skip extra boot options* selection



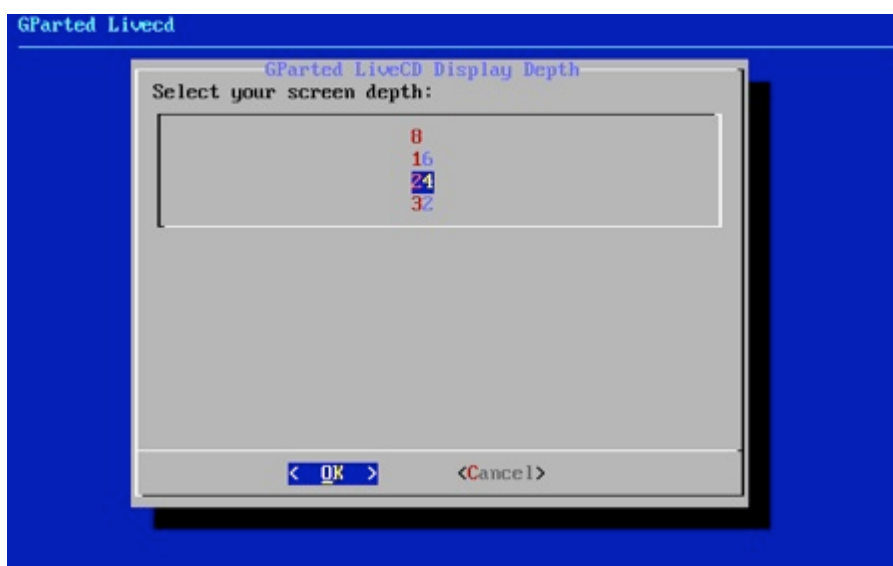
- Again more text will scroll by, you can ignore it
- At the *GParted LiveCD Language* screen select English and press return



- At the *GParted LiveCD Keymap* screen select **qwerty/us.map**, and press return



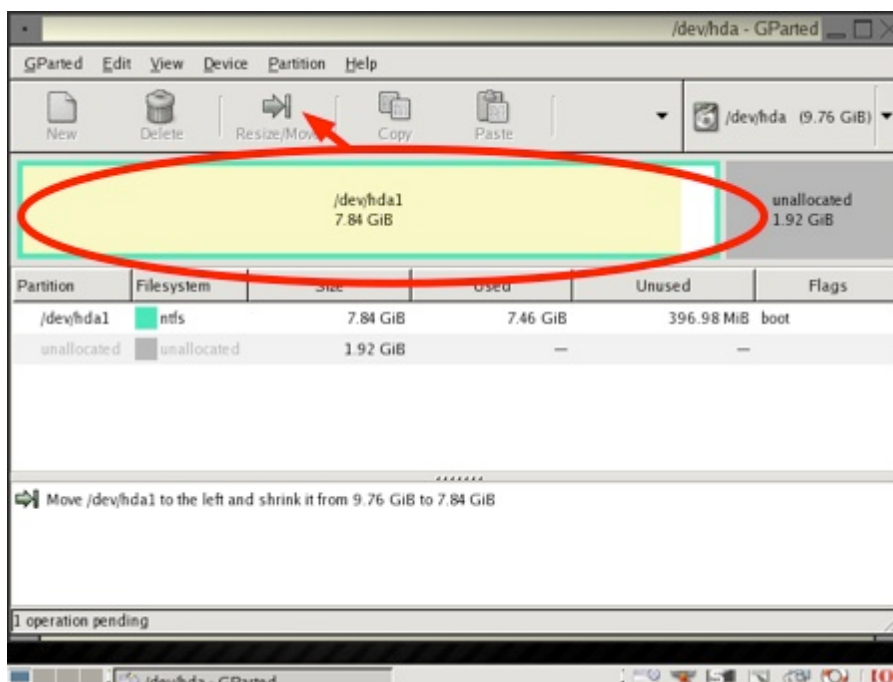
- At the *GParted LiveCD Display Depth* screen select **24**, and press return



- At the *GParted LiveCD XRES* screen select **640 x 480** (DO NOT SELECT ANYTHING HIGHER), and press return

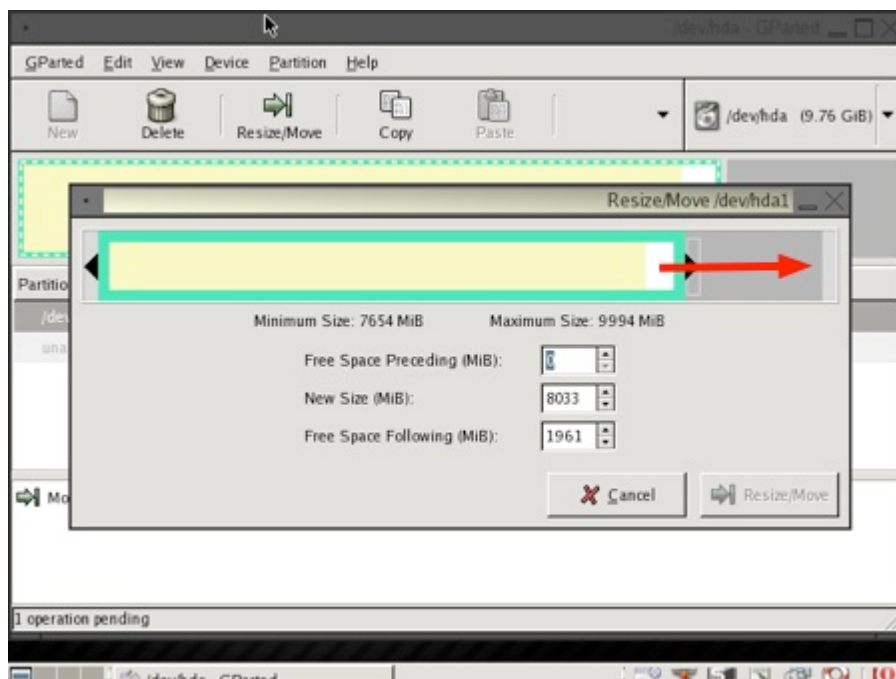


- Now GParted will start
- You will now see your virtual hard drive partition visually
- Click on **/dev/hda1** then click on the **Resize/Move** button

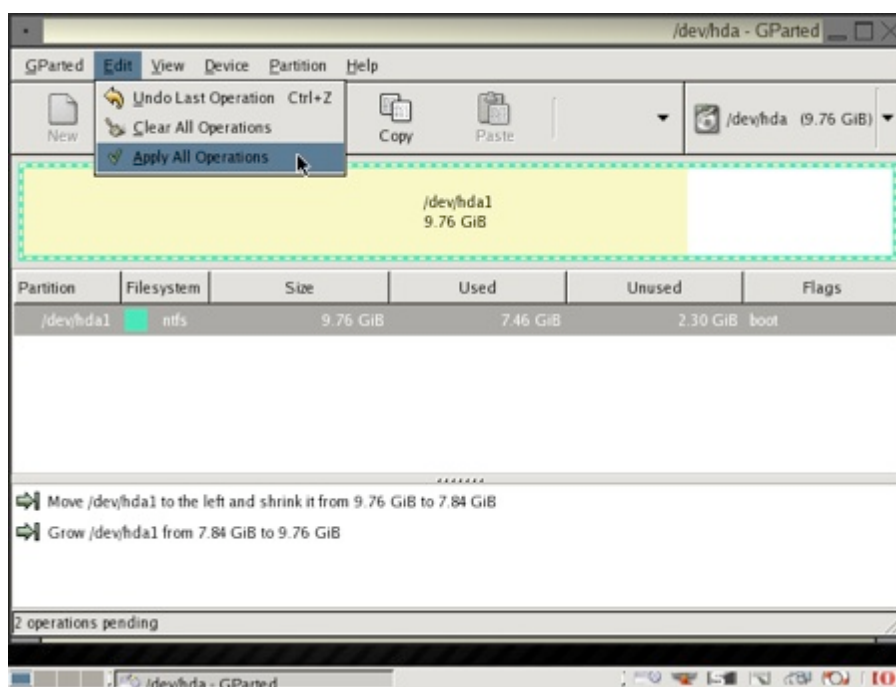


- In the new window that pops up click on the arrow on the right side and slide it as far right as it can go

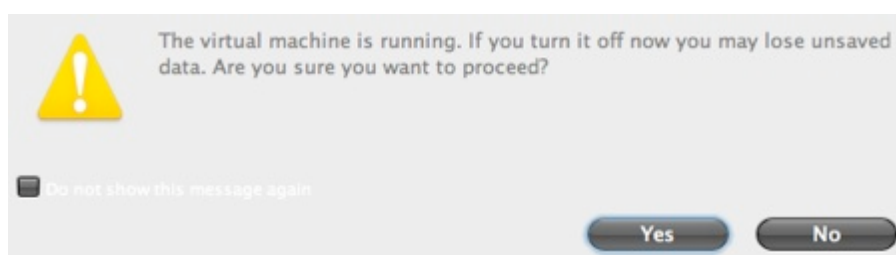
How to Resize Your Parallels Drive, and Get Windows to Recognize It



- Then press the **Resize/Move** button
- Then under the **Edit** menu select **Apply All Operations**



- Once GParted is done, it will ask you to restart the system, at this time you can press the **red stop button** in Parallels and say **Yes** it is safe to turn the virtual machine off



- Now go back to the **Edit** menu and select **Virtual Machine...**
- In the new *Configuration Editor* window, in **Boot Sequence** go back to the **Hard Disk, CD-ROM, Floppy** option
- Then select the **CD/DVD-ROM** option, again
- Under the *Emulation* subdivision select **Use CD/DVD-ROM Drive** again
- Then press **OK** in the *Configuration Editor* window
- Start your Windows Virtual Machine
- Windows should boot to the **Check Disk Error Screen**, this is normal. Windows is rebuilding the virtual hard disks partition table
- The system will restart once the error check is complete, once the system is restarted Windows will recognize your new larger virtual hard drive

Other stories breaking the silence...

- **Prev:** [Morn' Yawn: The iPod Shuffles are now colorized](#)
- **Next:** [Mini Flashlight Stun Gun](#)

- [Migrate from BootCamp to Parallels](#)
- [Parallels - IE7 & Firefox in "coherence" mode](#)
- [Latest Parallel release supports internal iSight](#)

30 Comments, [Comment](#) or [Ping](#)

1. Tyler Lynch

[January 30th, 2007 - 11:17 am](#)

Just wondering, what version of Parallels are you using?

2. [Dan](#)

[January 30th, 2007 - 11:38 am](#)

3120

3. Barron

[January 30th, 2007 - 5:43 pm](#)

This would be possible for any guest OS (not just Windows), n'est-ce pas?

And for that matter, for any primary OS (not just OS X)?

4. Ross

[January 30th, 2007 - 10:29 pm](#)

What is that theme you are using with the black buttons? How do you install it, could you do a post on that?

5. Hareron

[January 31st, 2007 - 9:59 am](#)

Couldn't you just use Partition Magic within Windows to do this?

6. [Dan](#)

[January 31st, 2007 - 10:03 am](#)

Ross it is a ShapeShifter theme. And Hareron - GParted is FREE :)

7. [TjL](#)

[January 31st, 2007 - 6:08 pm](#)

@ Hareron: Yes, but Partition Magic is \$70. This is free.

8. Doug
[January 31st, 2007 - 7:24 pm](#)

Hareron,

Partition Magic doesn't work in Parallels. I've tried version 7 and 8 and they error when you try to apply the changes to the partition.

9. LlamaNerds
[February 1st, 2007 - 11:34 am](#)

Wow. I actually figured this one out on my own. Nice to see someone else came to the same conclusion! It helps that I test and use a lot of Linux live cds on Windows boxes at work.

10. sfw
[February 1st, 2007 - 11:35 am](#)

This doesn't have to be this complicated... (from my posting last year at parallels mac forum):

(0) For Mac users, at least, realize this all is a bit lame. While you might expect that you could simply use Parallels ImageTool.app to expand your virtual disk image, Win XP will not recognize this expansion automatically. (The absence of this information in the Parallels User Guide fosters this expectation.) Once the image has been expanded with ImageTool.app, Win XP *must* be told to extend it.

(1) Duplicate your Parallels virtual disk image file using the host operating system. On a Mac use the Finder; the location of the file is visible in the Parallels VM property page for you virtual WinXp machine in the "Hard Disk 1" resources section. Use Parallels' ImageTool.app to expand the original as desired.

The duplicate isn't just for a backup. Without using a live CD to boot the virtual machine (as mentioned elsewhere in this thread), you will need to boot into Win XP from a volume that is *not* being extended. Thus:

(2) Using the Parallels VM property editor, add a new hard disk to the virtual machine. This hard disk should use the duplicate disk image created in (1). It will (initially, at least) be known by the resource name "Hard Disk 2" .

(3) Arrange for Parallels to boot off the duplicate. I think this must be done by changing the "Connect to" setting in the "Advanced" tab of the "Hard Disk 2" in the Parallels property editor to "IDE 0:0" . You will be asked if it is OK to swap; say yes. (Perhaps there is a less hacky way of changing the volume from which the virtual machine boots, but I wasn't able to find it.) Note that this has the side effect of changing the names of the resources: "Hard Disk 1" becomes "Hard Disk 2" and visa versa.

This step is necessary because, it seems, the Win XP's DISKPART is unable to extend the drive from which the virtual machine system is booted. Unfortunately, DISKPART does not give such an explicit error message but instead a general one, perhaps the same one that people are seeing when they attempt to extend a FAT32 volume. This may be the source of some confusion in this thread.

(4) Now start the virtual machine. Once the system is booted, it may say that new hardware detected suggests rebooting. I'm not sure if it is necessary, but go ahead and reboot.

(5) Once rebooted, from the Start menu use "Run" and type "DISKPART". In the resulting window type "list volume" (not "list volume*s*", DISKPART is fussy). Under the specifics

described here, the volume to extend should appear as “Volume 2” , letter “E”, I think. This is a bit dicey, though, since the volume you booted from looks in all other ways identical to the volume you want to extend. Then type “select volume 2” , and then “extend”.

(6) Shutdown Win XP and clean up the mess made in (3), (2) and (1). In the Parallels VM property editor, set “Hard Disk 2” (remember the names swapped in (3)) to “IDE 0:0” . Remove what then becomes known as “Hard Disk 2” . Finally, if desired, delete the duplicate made in (1).

(7) When you restart your VM, it may again say that new hardware detected suggests rebooting. Again, while maybe not necessary, go ahead and reboot. Once rebooted you should see the Win XP now realizes that your disk is larger.

11. [Tony D](#)
[February 1st, 2007 - 7:59 pm](#)

After you extend it within Parallels, you can just open up the VM and use diskpart.

```
c:\>diskpart
diskpart>display volume
diskpart>select volume #
diskpart>extend
diskpart>exit
```

It’s part of the OS, and it takes seconds. Use it with VMware all of the time.

12. [sfw](#)
[February 2nd, 2007 - 9:45 am](#)

The issue with DISKPART is that it cannot extend the volume that booted the machine. This is a problem that must be worked around in the common usage of Parallels on the Mac.

13. [Michael](#)
[February 2nd, 2007 - 11:24 am](#)

If you are using Vista, DISKPART can extend the volume that booted the machine.

14. [Brian](#)
[February 2nd, 2007 - 4:06 pm](#)

In my WinXP disk management snap-in, the lower pane now identifies my disk at it’s new size, but the upper pane continues to show “capacity” as the old size. Any reason why this is happening? It seems like Windows is getting two different stats off of the same disk.

15. [Daniel M.](#)
[February 3rd, 2007 - 12:59 am](#)

Here’s a VMware P2V trick for extending boot volumes with DISKPART — Clone your Windows Install, mount the original VM’s C:\ disk as a D:\ Drive on the clone, then extend it,

16. [maelcum](#)
[February 5th, 2007 - 10:23 am](#)

DISKPART has nothing to do with Vista; it’s part of Windows XP already.

Most people just stumble over it, since Vista’s installation routine uses it extensively.

17. [Collin](#)
[February 11th, 2007 - 12:20 pm](#)

diskpart will only work if you are using ntfs filesystems.

18. Geoff
[February 18th, 2007 - 3:05 am](#)

So, I tried the procedure above, using Gparted. It gave me an error that the operation to expand the partition failed. So then I tried to use SFW's method, again an error message. This one said that "diskpart failed to extend the volume. Please make sure the volume is valid for extending."

Anyone have any ideas?

19. Tad
[February 19th, 2007 - 11:02 am](#)

I followed the instructions above for creating the duplicate disk image, adding it to the list of drives, booting from the first disk image, running DISKPART and then selecting the second drive partition, then simply issuing "EXTEND" (Geoff - when you ran DiskPart did you SELECT the volume of the 2nd drive, then SELECT the partition, THEN issue the EXTEND command?), and that worked. I then removed the first drive and made sure the 2nd drive was primary boot and all is well. I did have to reboot XP once.

20. pigwiggles
[March 7th, 2007 - 11:42 am](#)

This doesn't have to be this complicated... (1) Duplicate your Parallels virtual disk image file using the host operating system.

I don't see how using Gparted is any more complicated than your method. My virtual disk is a dozen+ GB. Cloning it for the sole purpose of using its partition utility is a bit silly. Gparted is small and simple to use. Something I can keep kicking around in my Parallels folder for later use.

21. Glenn
[March 11th, 2007 - 1:05 am](#)

I had trouble with 0.3.4 of gparted-liveCD, in that when I hit return after the initial boot prompt, the screen went blank. I downloaded 0.3.3 of gparted-liveCD, and that worked fine.

My C:\ partition was FAT32, but that didn't seem to matter. I am now a happier camper.

I am using build 3170 of Parallels Desktop for Mac.

rgds
gdr

22. JTS
[March 21st, 2007 - 5:03 pm](#)

I can't get Parallels to select the gparted file I downloaded - it is grayed out, and when I change the name to "gparted-livecd-0.3.3-0.iso, I can't get the virtual machine to boot off this rather than my hd image. Help!

JTS

23. W Aronsohn
[March 24th, 2007 - 5:20 pm](#)

The process using GPart worked fine until I tried to boot into Windows Vista. Now I get an

error message saying: Windows\system32\winload.exe (status 0x0000225) and “The selected entry could not be loaded because the application is missing or corrupt.” Booting with the installation DVD does not work as it instructs me to do.

I think I’ve fried my Vista installation. Anyone have any ideas?

24. Alan
[April 2nd, 2007 - 6:03 pm](#)

Thanks. It worked a treat.

25. nick
[April 8th, 2007 - 2:06 am](#)

Worked well on XP. Thanks.

26. The Trotter
[April 15th, 2007 - 4:44 am](#)

Perfect instructions for how to increase the size of Parallels virtual hard disk and get windows to recognise it.

Spot on. Well don.

27. Jeff
[April 17th, 2007 - 12:11 pm](#)

Worked perfectly. Thank you for the information. The only thing I had a problem with was GParted not wanting to boot properly if the RAM was set to over 512MB. I adjusted the size while making resizing and changed it back when I was done. Great walk through!

28. [David](#)
[April 27th, 2007 - 12:14 am](#)

You rock. Your instructions are right on the money. I appreciate the screenshots as well. It’s great to see people complain that there are easier ways AFTER you’ve gone to the trouble of documenting the easy and free process.

Thanks.

29. beau janks
[April 28th, 2007 - 4:22 am](#)

Worked perfect on a Windows Server 2003 VM

30. [C. Scheidel](#)
[May 3rd, 2007 - 11:48 pm](#)

Thank you thank you thank you. This tutorial worked perfectly. I was so perplexed for a while and now I can install new software I have been attempting to get on my virtual instance. This post was a lifesaver. Again, many thanks.

Reply to “How to Resize Your Parallels Drive, and Get Windows to Recognize It”

Name (required)

<input type="text"/>	Mail (required)
<input type="text"/>	Website
<input type="text"/>	

UNEASYsilence reserves the right to remove and or edit any comments deemed as inappropriate or overtly offensive toward fellow readers. Feel free to get in touch regarding any questions or concerns via email at tips@uneasysilence.com.

SUBMIT

Browse by category

- [Apple](#)
- [AV](#)
- [Contest](#)
- [Cool](#)
- [Downloadable](#)
- [Entertainment](#)
- [Gadgets](#)
- [Geeky](#)
- [Howto](#)
- [Humor](#)
- [Mobile](#)
- [News](#)
- [OnLocation](#)
- [Politics](#)
- [Privacy](#)
- [Random](#)
- [Revisited](#)
- [Risque](#)
- [Scoop](#)
- [Site News](#)
- [Snippet](#)
- [SoapBox](#)
- [Stupid](#)
- [Tech](#)
- [UUF](#)

- [Top](#)
- [Content \(RSS\)](#)
- [Privacy policy](#)
- An [Experiment23](#) Project
- Presentation: [IS](#)